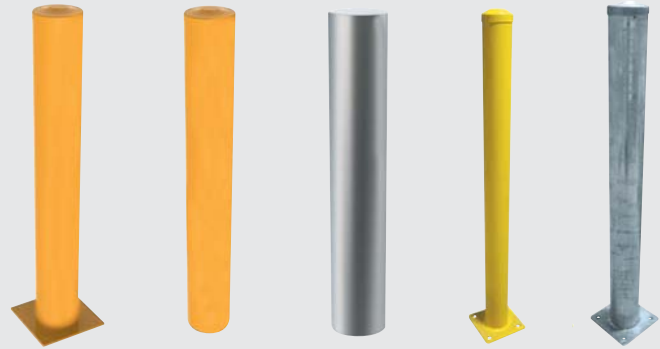


Bollards



80NB Flushmount Bollard (1000)

Pipe: 90mm Dia x 4mm steel tube
Base Plate: 200mm x 200mm x 6mm (drilled 4 times)
Standard Height: 1000 mm
Finish: Hot Dip Galvanised 012277
Finish: Zinc Plated & Powdercoated 012278

80NB Flushmount Bollard (1150)

Pipe: 90mm Dia x 4mm steel tube
Base Plate: 200mm x 200mm x 6mm (drilled 4 times)
Standard Height: 1150 mm
Finish: Hot Dip Galvanised 012279
Finish: Zinc Plated & Powdercoated 010797

80NB Inground Bollard

Pipe: 90mm Dia x 4mm steel tube
Standard Length: 1500 mm
Finish: Hot Dip Galvanised 012280
Finish: Zinc Plated & Powdercoated 010794

100NB Flushmount Bollard

Pipe: 114mm Dia x 4.5mm steel tube.
Base Plate: 200mm x 200mm x 6mm (drilled 4 times)
Standard Height: 1150 mm
Finish: Hot Dip Galvanised 012281
Finish: Zinc Plated & Powdercoated 010084

100NB Inground Bollard

Pipe: 114mm Dia x 4.5mm steel tube
Standard Length: 1500 mm
Finish: Hot Dip Galvanised 012199
Finish: Zinc Plated & Powdercoated 010792

150NB Flushmount Bollard

Pipe: 165mm Dia x 5/6mm steel tube
Base Plate: 250mm x 250mm x 10mm (drilled 4 times)
Caps: Galvanised spun metal
Standard Height: 1200 mm
Finish: Hot Dip Galvanised 012282
Finish: Zinc Plated & Powdercoated 010085

150NB Inground Bollard

Pipe: 165mm Dia x 5/6mm steel tube
Base Plate: N/A
Caps: Galvanised spun metal
Standard Length: 1500 mm
Finish: Hot Dip Galvanised 012283
Finish: Zinc Plated & Powdercoated 010793

200NB Flushmount Bollard

Pipe: 219mm Dia x 4.6mm steel tube
Base Plate: 300mm x 300mm x 12mm (drilled 4 times)
Standard Height: 1200 mm
Finish: Hot Dip Galvanised 012283
Finish: Zinc Plated & Powdercoated 012284
Optional Cap: Galvanised spun metal 012285

200NB Inground Bollard

Pipe: 219mm Dia x 4.6mm steel tube
Finish: Hot Dip Galvanised - 1500mm 012286
Finish: Hot Dip Galvanised - 1800mm 012287
Finish: Zinc Plated & Powdercoated - 1500mm 012288
Optional Cap: Galvanised spun metal 012289

316 Grade Inground Stainless Steel Bollard

Pipe: 100mm x 1200mm
Finish: No 4 Linish Finish 010798

Pipe: 165mm x 1200mm
Finish: No 4 Linish Finish 010799

316 Grade Surface Mount Stainless Steel Bollard

Pipe: 100mm x 1000mm
Finish: No 4 Linish Finish 010800

Pipe: 165mm x 1000mm in ground
Finish: No 4 Linish Finish 010801